

SLUG MAG

LOCAL PHOTOGRAPHY

ISSUE
378

JUNE 2020 • ALWAYS FREE
VOLUME 31 • SLUGMAG.COM



HALLPASS



SUNDAY SCHOOL

putting the FUN back in #brFUNch
Sunday 11am - 8pm
HallpassSLC.com

@HallPassSLC @BeerzomBiessLC @atthegateway

YOU'LL NEVER FORGET YOUR
**NEXT TRIP
TO SPACE**

Re-opening soon.



110 S 400 W | CLARKPLANETARIUM.ORG | 385-468-7827

The Stockist

Men's and Women's Clothing & Home Goods



Summer goods arriving daily.
Shop online, or instore.
Curbside pickup available.



thestockistshop.com
instagram.com/the_stockist

Mon - Sat. 10a-8p. SUN 11a-5p.
875 East. 900 South | 801-532-3458



FORECAST CALLS FOR 5% HAZY

With big, juicy hop aromas of mango, orange and pineapple, Hazy Nosh features low bitterness with a soft mouthfeel and velvety, opaque appearance.

PROUDLY BREWED IN SALT LAKE CITY
UINTABREWING.COM - 801.467.0909 - @ @ f





CONTRIBUTOR LIMELIGHT

CJ Anderson – Photographer

CJ Anderson has shot photos for our monthly “Skate Photo Feature” and beyond since February 2017. One of the marks of a great skate photographer is that they’re always out to get their fix of skate shots, and Anderson’s always been hungry to get ‘em! He chalks it up to continually striving to try new things and move around to get the shot. He counts his long-exposure photo of **Tyson Bowerbank** (Issue 359) and that of **Coda Bonnell**’s HUGE heelflip grab over a West Jordan loading dock (Issue 368) as his favorite “Skate Photo Feature” contributions. This month, Anderson has captured **Britton Larsen**’s backside disaster at *Solo* on pg. 26. Anderson’s skills range as well, from portraiture to his foray into fashion photography for our 29th anniversary fashion show. Whether it’s skate photography or other assignments, Anderson is solid, and we love him for it.



ABOUT THE COVER: Daniel Everett’s (@dbeverett on Instagram) Untitled photograph from his 2019 *Marker* series bestows invigorating imagery to the cover of our *Local Photography* issue. Pairing contrasting bursts of color with a glass building, the image demonstrates creative diversity in local photography.

DISCLAIMER: *SLUG Magazine* does not necessarily maintain the same opinions as those found in our content. Content is property of *SLUG Magazine*—please do not use without written permission.

Publisher:

Eighteen Percent Gray

Executive Editor:

Angela H. Brown

Editor:

Alexander Ortega

Editorial Assistant:

Bianca Velasquez

Digital Coordinator:

Connor Lockie

Copy Editors:

Alexander Ortega,
Austin Beck-Doss,
Benjamin Bigelow,
Bianca Velasquez, Connor Lockie,
John Ford, Kaitlin Smith,
Marina McTee,
Zane Hirschi-Neckel

Editorial Interns:

Austin Beck-Doss, Avrey Evans,
Jamie Christensen,
Lois Brady

Content Consultants:

Amy Jorgensen, Edward Bateman,
Jens Nielsen, Nancy Rivera

Cover Photographer:

Daniel Everett

Lead Graphic Designer:

Joshua Joye

Graphic Design Team:

Nick Ketterer, Paul Mason

Ad Designers:

Brad Barker, Christian Broadbent,
Dianna Totland, KJ Jackett,
Nick Ketterer, Ryan Peck

Front-end Developer:

Katelyn Williamson

Illustrators:

Andrew Beck, Ashley Fairbourne,
Brett Ferrin, Brighton Metz,
Chris Bodily, David Sadler,
Diana Garcia, Garrick Dean,
James Bible, Jenn Olsen,
Jordan Peterson, Karly Tingey,
Lawrence Magana, Ricky Vigil,
Robin Namini, Ryan Perkins,
Samuel Sherrill, Sarah Donnelly,
Spencer Holt

Photographers:

Bob Plumb, CJ Anderson,
Chris Gariety, Colton Marsala,
Dominic Jordon, Gilbert Cisneros,
Jack Dawe, Jayson Ross,
Jessica Bundy, Jon Tinsley,
John Barkiple, Kelly Williams,
Logan Sorenson, Luca Khosrova,
Maralee Nielson,
Matt Nelson, Nathan Gentry,
Niels Jensen, Randy Roberts,
Roberto Valdez, Sam Milianta,
Scott Frederick, Talyn Sherer,
ThatGuyGil, Tyson Call,
Weston Colton, William Cannon

Videographers:

Mason McFarland

Community Development & Advertising Sales:

John Ford, Community
Development Manager:
johnford@slugmag.com
Angela H. Brown:
sales@slugmag.com
SLUG HQ: 801.487.9221

Advertising Sales Reps:

Now Hiring!

Events Assistant:

Morgan Keller

Marketing Interns:

Joelle Bleiman, Parker Schlaf

Brand Ambassadors:

Alex Topolewski, Brennen Durka,
Dave Crespo, Erica Marley,
Hillary Packham, Joelle Bleiman,
Lark Smith, Parker Schlaf

Distro Drivers:

Now Hiring!

Ali Shimkus, Austin Beck-Doss,
Austin Doty, Connor Lockie,
Dave Crespo, Eric U. Norris,
Heather Holladay,
Kimberly Portillo,
Parker Scott Mortensen,
River Rose Haggerty,
Tommy Dolph, Tony Bassett,
Zak Elsea

Senior Staff Writers:

Alex Blackburn,
Alexander Ortega, Ali Shimkus,
Ben Tilton, Ben Trentelman,
Bill Frost, Brian Kubarycz,
Bryer Wharton, Chris Hollands,
Connor Brady, Connor Lockie,
Dean O Hillis, Eric U. Norris,
James Bennett, James Orme,
John Ford, Kamryn Feigel,
Kathy Rong Zhou, Kia McGinnis,
Lauren Ashley, Mike Brown,
Mistress Nancy, Nick Kuzmack,
Paige Zuckerman,
Parker Scott Mortensen,
Peter Fryer, Rachel Jensen,

Ryan Michael Painter, Ricky Vigil,
Rio Connelly,
Sean Zimmerman-Wall,
Steve Goemaat, Sylvia Hollands,
Taylor Hartman, Tyson Call,
William Swartzfager,
Zaina Abujebarah

Contributing Writers:

Alexander Coulombe,
Arcadio Rodriguez,
Austin Beck-Doss, Austin Doty,
Avrey Evans, Bianca Velasquez,
Brian Udall, Brittnie Gallegos,
Caroline Jackson, Corinne Bauer,
Danielle Susi, Emilee Atkinson,
Evan Welsh, Hannah McBeth,
Jamie Christensen,
Jeanine Carmichael,
Jeremy Cardenas, Jesse Hawlish,
Kassidy Waddell, Keith McDonald,
Kenz Waldon, Kimberly Portillo,
Lois Brady, Mandy Murry,
Mary Culbertson, Mekenna Malan,
Nia Shaunce Morton,
Patrick Gibbs, Paul Zuniga,
Russ Holsten, Sam D’Antuono,
Seeth McGavien, Tim Kronenberg,
Tim Schoof, Westin Porter,
Zach Lambros

SLUG Magazine’s Official Podcast: SLUG Soundwaves

Executive Producer:

Angela H. Brown

Soundwaves Producer:

Parker Scott Mortensen

Associate Producers:

Alexander Ortega,
Bianca Velasquez, Connor Lockie,
John Ford, Joshua Joye

FOLLOW
@ALIBISLC
ALONG



@borosyndicate

BOROSYNDICATE

Glass Gallery & Smoke Shop

DOWNTOWN SLC 60 Exchange Place SLC, UT 84111 (801) 349-1688 Mon - Thur: 11am - 12am Fri - Sat: 11am - 2am Sun: 12pm - 6pm

MURRAY 5180 S. Commerce Dr Unit R Murray, UT 84107 (801) 281-1109 Mon - Thur: 12pm - 10pm Fri - Sat: 12pm - 10pm Sun: 12pm - 6pm

Must be 19 with Valid I.D.

Your downtown SLC business may qualify for

XMission Fiber

For more information, call
801-539-0852



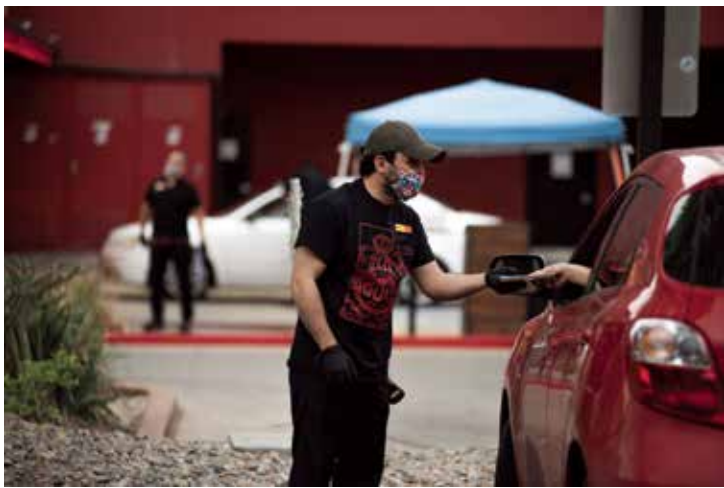
Annelise Duque's (anneliseduque.com) Filipino and American heritage lies at the heart of her work. Using storytelling in her photos through costumes and props, Duque centers herself in her work, juxtaposing with her ancestry. Her photos explore the space she discovers in between.

ANNELISE DUQUE:

"no. 1," 2019, from the *Remember Them Alive* series.

Finding what's between selfhood and heritage
 By Bianca Velasquez • bianca@slugmag.com

"no. 1," 2019, from the *American Forgetting* series.



CURBSIDE FOR SURVIVAL

Written by By Rio Connelly • globalricon@gmail.com || Photos by Niki Chan Wylie • nikichanphoto.com

The COVID-19 constraints on bars/restaurants forced quick adaptations to takeout or delivery operations. These photographs are a testament to their resilience and the support of their customers.

TOP LEFT: RED IGUANA 2
866 W. South Temple, SLC
M-F: 11a-10p,
Sa: 10a-11p, Su: 10a-9p
rediguana.com

TOP RIGHT:
SHADES BREWING
154 W. Utopia Ave.,
South Salt Lake
M-Su: 3p-7p
shadesbrewing.beer

BOTTOM: SAFFRON VALLEY
26 E St., Salt Lake City
Tu-F: 11a-2:30p,
Sa-Su 11a-3:30p, Closed Mon,
Tu-Sa 5p-10p, Su 5p-9p
saffronvalley.com

IRIS
PIER
CING
COM
SHOP
NOW



Amid shooting for local-business clients, Brent Courtney (brentcourtney.co) touts the well-earned talent of blending his visual-art disciplines seamlessly. “I take pride in being a one-stop design shop for my clients,” he says. He also created the July 2018 and July 2019 *SLUG* covers—testaments to his exceptional craft.

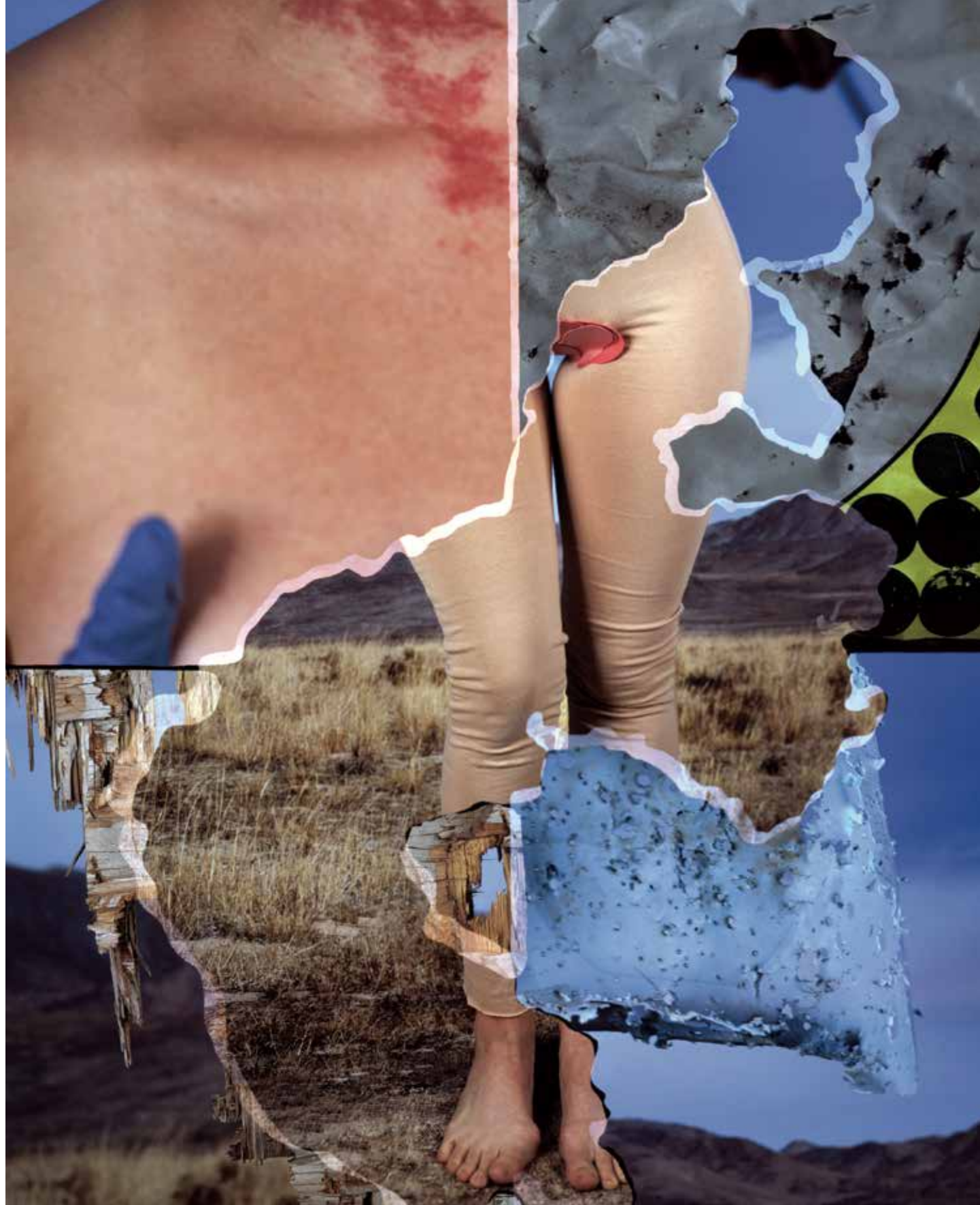
PHOTOGRAPHY-PLUS

“Mocha Composed Cone,” 2019, from *Normal Ice Cream Monthly Flavors*.

Brent Courtney, Image Sculptor

By Alexander Ortega • alexander@slugmag.com

“Shireen Ghorbani and Bart the Bear,” 2018, from *Public Lands Campaign*.



Jaclyn Wright's (jaclynwright.com) multimedia photography and performance art examine ecofeminism and colonialism of body and land. Wright's topography of her embodied experience brings this examination to light as she explores metaphors of power, annexation and alteration through her birthmark.

JACLYN WRIGHT's Multimedia Metaphor Leaves a Deep Mark
By Paige Zuckerman • paigex@redwillowcounseling.com

Untitled, 4x5 Positive Film, Archival Inkjet Print, 2019, from *Marked*.

OF ADVANCED SKINCARE

BEAUTY

EYELASH EXTENSIONS
BODY WAXING
LASH & BROW
BRAZILIANS

PAMPER

EUROPEAN FACIALS
SUGAR SCRUB
SPA PEDI & MANI
MLIS WRAP

RESULTS

CHEMICAL PEELS
LASER
DERMALINFUSION
MICRONEEDLING

BE A PART OF THE
BEAUTY INDUSTRY! CALL FOR
OUR NEXT START DATE!
801.530.0001
WWW.SKINWORKS.EDU

coffee roasting company

FIND COLD BREW RECIPES AT **CAFFE IBIS .COM**

GET **10% OFF**
LOGAN CANYON BLEND COFFEE
WITH CODE: **COLDBREW**

SLUG SOUNDWAVES

SLUG MAGAZINE'S OFFICIAL PODCAST

Local stories from local musicians

MUSIC • ARTS • LIFESTYLE • EVENTS

SLUGMAG.COM STITCHER • iTunes

3200 E
BIG COTTONWOOD RD.
THEHOGWALLOW.COM

**BEER
BITES
SPIRITS
SHENANIGANS**



Levi Jackson's (levij.com) photographs reference the illusions operating in the Western American landscape and culture.

Jackson, a Utah native, uses his art to explore place narratives and how people assign meaning to objects.

LEVI JACKSON Explores Illusions in the West's Promised Land

By Hannah McBeth • hannahmcbeth22@gmail.com

Fishy, 2019, 44x35" Inkjet Print, from Jackson's portfolio

TOP LEFT: *Ms. September*, 2014, 35x44" Inkjet Print, from Jackson's portfolio.

TOP RIGHT: *Mighty Ducks*, 2014, 35x44" Inkjet Print, from Jackson's portfolio.

BOTTOM: *Landscaper*, 2019, 35x44" Inkjet Print, from Jackson's portfolio.



DOUGLAS TOLMAN

By Tim Schoof • t.schoof7@gmail.com

TOP LEFT: “Inland Sea 6,” 2019, from the *Inland Sea* series.

TOP RIGHT: “Inland Sea 1,” 2019, from the *Inland Sea* series.

BOTTOM: “Bonneville Assessment 1,” 2020, from the *Bonneville Assessments* series.

Douglas Tolman (douglastolman.com) began his journey in photography capturing the pure freedom, adventure and exhilaration of downhill longboarding. Tolman began taking photos in high school, capturing thrilling moments while adventuring in the outdoors. “I really got to witness and photograph some magical moments bombing hills with friends in beautiful morning light,” he says. His appreciation for photography as an art quickly blossomed, and he expanded his focus to

include the deserts, mountains and the wilderness of Utah. His exploration, especially near the Great Salt Lake, exposed him to the consequences wrought by generations of settlement, industry and exploitation, affecting the health of both the indigenous ecology and neighboring communities. As a descendant of the pioneers who settled in Utah, his photography examines the conflict between conservation and industrialization in a striking, minimalist style.

Est. 1997



koi
PIERCING STUDIO
KOIPIERCINGSLC.COM
(3TH & 9TH SLC) (801) 463-7070



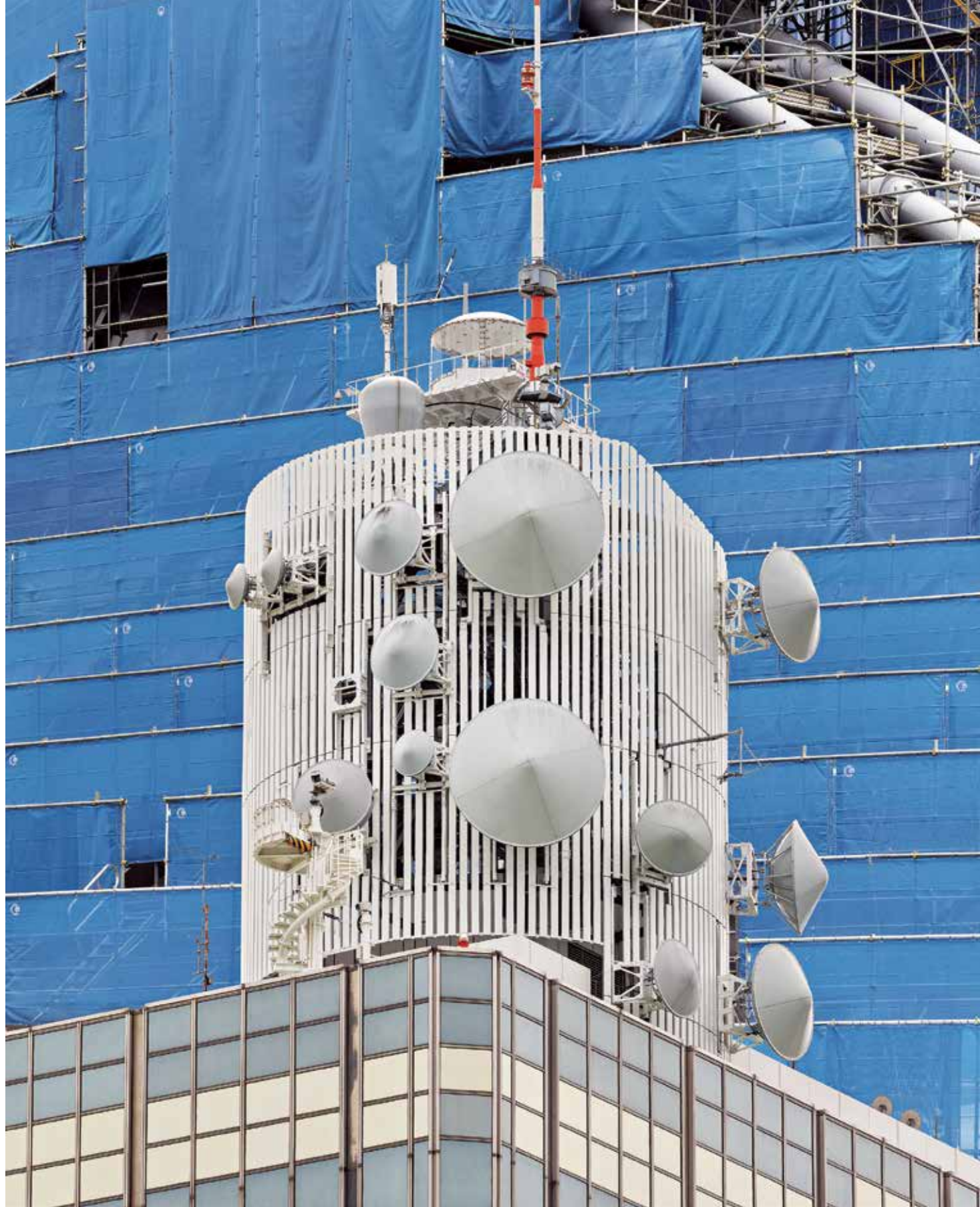
Christine Kenyon (christinekenyon.com) advocates through **Save a Star Foundation** to preserve dark skies. "My goal for the future isn't so much to be a famous photographer as it is to have a legacy that is protecting the night sky," she says.

DEFENDER OF DARKNESS: Christine Kenyon's Night-Sky Advocacy
By Austin Beck-Doss • austinbeckdoss@gmail.com

THIS PAGE: *Milky Way Magic*, 2018, High Uintas, Utah.

NEXT PAGE: *Alien Lands*, 2019, Northern New Mexico.





Cover photographer Daniel Everett (daniel-everett.com) investigates how urban landscapes layer on top of each other, unraveling their

sense of order and progress. “I’m interested in how things that were once visionary tend to look pitiable in retrospect,” he says.

PROGRESS KNOT: Daniel Everett’s Cityscapes
By Parker Scott Mortensen • [@coldbloom](#)

“Untitled (from *Vantage Point*), 2019.”

“Untitled (from *Vantage Point*), 2018.”



Photography may present the illusion of direct representation, but David Baddley's (davidbaddley.com) art can shatter this mirage in real time. "Part of the human condition is that we are of the land; we are of the air; we are of the water; we are of nature. At the same time, we've come to live in a way that sort of separates ourselves from it," says Baddley, veteran Utah

DAVID BADDLEY: Finding the Line Between Nature and Self

By Connor Lockie • connor@slugmag.com

TOP LEFT, TOP RIGHT, BOTTOM: DEER CREEK, UTAH.

photographer and Professor of Art & Photography at *Westminster College*. Through Baddley's stark, minimal work, the viewer directly encounters this disconnect. While nature exists in Baddley's photos, the "true" image always seems just out of reach, ob-

scured through the human/technology screen of photography—sometimes Baddley goes so far as to disrupt the organic flow of his ecological subjects with a blunt representation of his own humanness.



MEGAN KNOBLOCH GEILMAN

By Jamie Christensen • jamie.christensen@bcsdstudent.org

Megan Knobloch Geilman works as a Photographic Art Director, responsible for how the thematic design and expression of the photo is perceived by the viewer. Her work in *tableau vivant*, or "living picture," demonstrates how a photo is layered while involving many moving parts.

"Adam's Dilemma," 2014, from the *Works of Translation* series.

Read the full profile about Megan Knobloch Geilman at SLUGMag.com.



Michael Kunde (michaelkundephoto.com) is a professional commercial photographer with a penchant for images of travel and adventure. Kunde produces personal photography from his travels and is known for his striking themes, which are indicative of life in rural areas of the United States. For more about Michael Kunde and to view his work, visit michaelkundephoto.com.

CAPTURING THE MOMENT WITH MICHAEL KUNDE

Nick Kuzmack • nicholaskuzmack@gmail.com

TOP LEFT: *Balloons Over Bagan*, 2013, from Kunde's personal collection.

TOP RIGHT: "Nutrien Soy Farmer," 2018, from the *Nutrien AG Solutions* campaign.

BOTTOM: *The Road to Mighty*, 2015, from the "Road to Mighty" Tourism campaign.

PUBLIC NOTICE

The Garage deck is officially open and, according to an anonymous source, is a registered enemy of Covid-19. See below:

- 1) OUR MENU, WHICH INCLUDES**
Bell peppers, broccoli, various citrus fruit, dark leafy greens, garlic, eggs, red meat, fish, avocado, to name a few.*
- 2) MUSIC**
Music can give the immune system a boost; fight off depression; decrease anxiety & tame the savage beast.
- 3) SUNLIGHT**
Sunlight creates vitamin D which is a building block of the immune system.
- 4) SOCIAL DISTANCING**
Tables will be spaced 10 feet apart and humans will be spaced 6 feet apart. There will also be sanitizing stations installed throughout the establishment.

* These items contain Vitamin A, Vitamin C, Vitamin D & Vitamin E, which are essential nutrients for the immune system.

THE GARAGE ON BECK | 1193 BECK STREET SALT LAKE CITY, UT | thegarageonbeck.com

DINING OUT IN THE AGE OF CORONA

WE KNOW THAT IT ISN'T EASY FOR EVERYONE TO DECIDE IF & WHEN THE TIME IS RIGHT TO START DINING OUT AGAIN.

FOR THOSE OF YOU THAT AREN'T READY, WE HAVE TAKE-OUT & DELIVERY.

FOR THOSE THAT ARE READY, WE WILL PROVIDE THE KIND OF FOOD, SERVICE, AMBIANCE AND THE APPROPRIATE TABLE DISTANCING AND THE LEVEL OF CLEANLINESS TO GIVE YOU COMPLETE CONFIDENCE IN YOUR DECISION.

FOR DELIVERY OPTIONS GO TO WWW.STONEGROUNDITALIAN.COM

WWW.STONEGROUNDITALIAN.COM | 801-364-1358 • 249 EAST 400 SOUTH • SLC, UT

SLUG MAGAZINE

Build Community With Us

MUSIC · ARTS · LIFESTYLE · EVENTS

ILLUSTRATION BY ANN CHEN

DEAR SLUG MAG READERS,

THANK YOU FOR STANDING WITH US DURING THESE STRANGE TIMES!

WE APPRECIATE YOU.

WE LOVE YOU.

WE'RE HERE FOR YOU.

JOIN US IN CONTINUING TO SUPPORT LOCALLY OWNED BUSINESSES IN ANY POSSIBLE WAY.

LOVE,
THE SLUG MAG TEAM



During the filming for Britton Larsen's *Welcome to BC Sandy* part, we took a trip to *SoJo Skatepark* and spent a few hours watching and capturing Larsen destroy the bowl!

SKATE PHOTO FEATURE

By CJ Anderson • @ca_visual

Britton Larsen – Backside Disaster in the Deep End – South Jordan, Utah



BEER OF THE MONTH

By Chris and Sylvia Hollands
chris.hollands@porchdrinking.com
sylvia.hollands@porchdrinking.com

Photo by @tbzdphoto

Beer Name:
**Slipstream India
 Pale Ale**

Brewery: Salt Flats
 Brewing Co.

ABV: 9%

Serving Style: 12-oz. can

Breweries and distilleries have had to get creative during these uncertain times. Countless adult-beverage businesses focused on beer to go, with some even manufacturing important sanitation products. In this case, *Salt Flats Spirits*, related to *Salt Flats Brewing Co.*, used the distilling process to help the cause and create one such item: hand sanitizer. With this in mind, we headed there to get it—plus

much-needed, fresh brewskis.

Deciding which of *SFB's* beer to pick was easy. We enjoy several of their brews; however, our chosen "Beer of the Month" is the Slipstream India Pale Ale. We couldn't wait to settle into the comfort of a West Coast DIPA after our journey.

Slipstream smells ultra-clean, with classic hints of pine, followed by breadly sweetness and the aroma of an inner peel from a ripened orange. A medium-to-light mouth-feel showcases flavors of orange and grapefruit that lead into a noticeably biting finish—something we enjoy about this style, rarely finding it in modern hazy/juicy IPAs.

Read the full "Beer of the Month" at SLUGMag.com.



WE ARE BACK.

We are excited to be back in business!!
 Open 7 days a week at both locations to
 serve you. We are taking special care to
 follow guidelines for everyone's safety.

See you at the SUE!!!!

—your Sue family

SLUG MAGAZINE

SALES TEAM NOW HIRING!

We're looking for professional,
 outgoing and reliable individuals
 who love to meet new people.

This is an advertisement sales position.



VISIT SLUGMAG.COM/STAFF FOR MORE INFORMATION



At the beginning of trails season here in SLC, Chris Flook (@chris_flook) celebrates the dawn of warm spring days by floating a lofty tuck no-hander over "Bertha" (top).

BMX PHOTO FEATURE

By Jon Tinsley • @jontinsley

Chris Flook – Tuck No-Hander – Salt Lake City



LOCAL MUSIC REVIEWS



Breakfast in Silence – CW: Loss

Self-Released (03.27)

Breakfast in Silence = Prism Bitch + the Due Diligence

–Emilee Atkinson



Freaky Jason – Some Lovey Dovey Shit

Self-Released (02.08)

Freaky Jason = Usher + Childish Gambino + Jinsang

–Taylor Hartman



Michael Barrow & The Tourists –

Something New – EP

Self-Released (06.12.19)

Michael Barrow & The Tourists = John Mayer + Mumford & Sons

–Mary Culbertson



Bird – Send It


High Vibe Recordings (03.20)

Bird = Poliça + Lorde

–Connor Brady





Read full reviews at *SLUGMAG.COM*.

Punctured
Piercing & Tattoo



THANK YOU, FRONTLINE MEDICAL WORKERS

2459 SOUTH MAIN STREET, STE. 6
BOUNTIFUL, UTAH
801-397-2459



Buying, selling or house curious?
Let's Zoom over a beer.

 Jennie Richau, REALTOR®
720.975.7070 Jennierichau.com
Jennie@urbanutah.com

YACHT ROCK JUICE BOX

16oz cans now available at grocery stores throughout Utah




PROPER BREWING CO

857 S Main St | SLC
properbrewingco.com

SLUG MAGAZINE
HOSTS THE 8TH ANNUAL

SLUG CAT

AN ALLEY CAT-STYLE BICYCLE RACE

PRESENTED BY

NEW BELGIUM
Fat Tire
AMBER ALE



Illustration by @jordankpeterson

MORE INFO AT
SLUGMAG.COM

SATURDAY, JUNE 27

\$5 REGISTRATION 4-5 P.M. AT SATURDAY CYCLES
ALLEY CAT RACE 5 P.M. • AWARDS CEREMONY 7 P.M.



MTN × WST
SLUG MAG

Bingham Cyclery
GREENbike
SLC DRUG ENJOY





YOUR PHOTOS DESERVE
BETTER THAN YOUR PHONE



Capturing change, finding new perspectives

I grew up always being in the outdoors and landscapes have had a hold on me long before I ever got a camera, so it was only natural for landscape to largely inspire my photography. I love the changing weather conditions and a wide array of lighting from storms, sunrise/sunset, to astro. I thrive on exploring new places and perspectives, the ability to see things differently than you would through your eyes. Picking out features and layers with a telephoto lens is my favorite way to shoot landscapes. I like to look for leading lines, layers, and an interesting foreground to frame my shot and add depth.

I was drawn to Sony and the A7iii for the image quality, low-light capabilities, compact mirrorless size for more space in my bag/travel, and awesome video specs for a solid hybrid camera. I love shooting multiple genres of photography and have loved the way it handles pretty much everything I throw at it.

Pictureline has me covered with a super knowledgeable staff and the large selection of services they provide from sensor cleaning to repairs, rentals when you need that specific lens or piece of gear, and an amazing store stocked with all the best equipment that makes you feel like a kid in a toy store.

- Zac Warwick, www.zacventurevisuals.com



@zacventure



α6600



α7 III



α7R IV

305 WEST 700 SOUTH • SALT LAKE CITY (801) 364-1200
AUTHORIZED SONY DEALER
ALL SONY PRODUCTS INCLUDE SONY INC. USA LIMITED WARRANTY

SONY

 **pictureline**
LEARN MORE AT WWW.PICTURELINE.COM